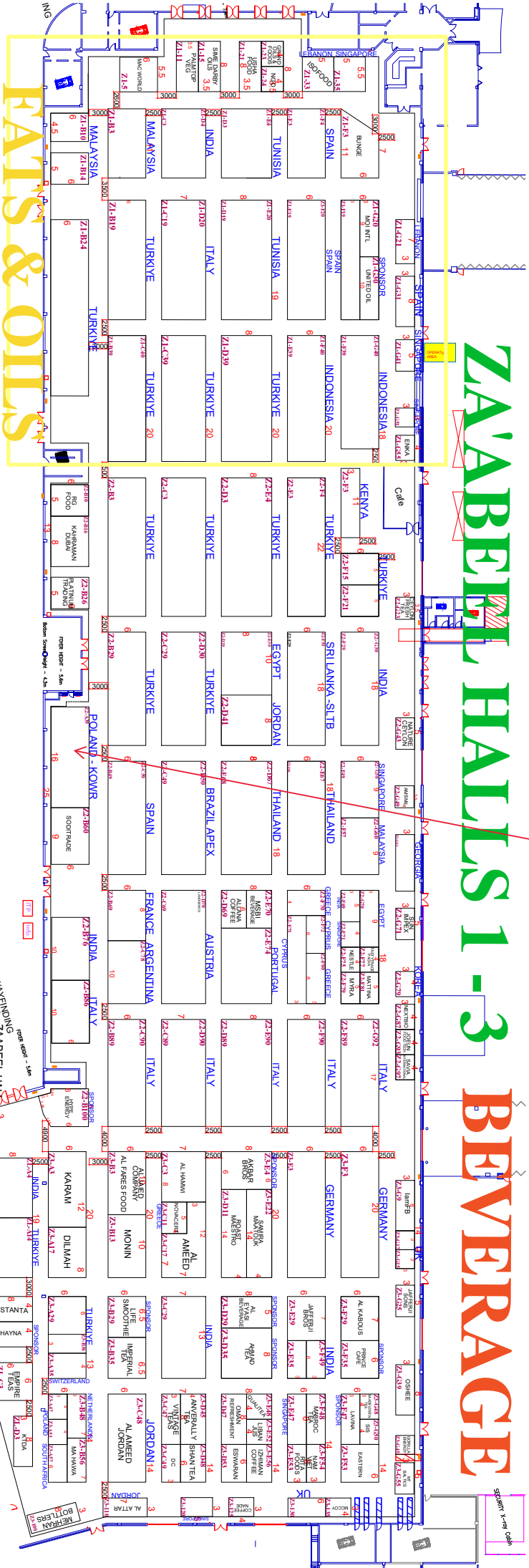


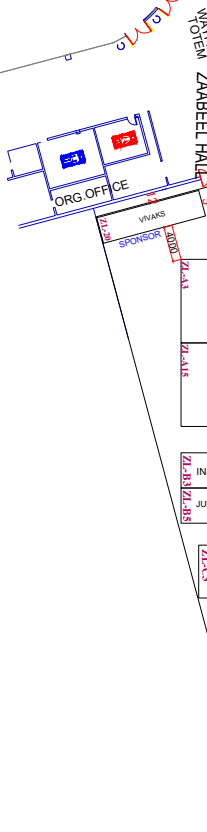
ZAVABELL HALLS 1-3 BEVERAGE

**POLAND KOWR
BEVERAGES
TOTAL SQM: 96 SQM
16X6 = 96 SQM**



GULFOOD 2025

Dubai World Trade Centre
February 17 - 21



BOOTH C INFRASTRUCTURE

SCALE 1:100

STREFA PODWYSTAWCÓW

- A. 4x INFORMATION COUNTER [0.5x0.5x0.9m]
- B. 4x GLASS COUNTER [0.45x0.45x2m]
- C. 4x BAR STOOL
- D. 4x ROUND TABLE
- E. 16x WHITE CHAIR
- F. 4x WASTE BIN 30l

STANOWISKO INFORMACYJNE KOWR

- A1. 1x INFORMATION COUNTER [1.5x0.5x0.9m]
- B1. 2x BAR STOOL
- C1. 2x ROUND TABLE
- D1. 8x CHAIR
- E1. 1x SCREEN LCD 70"
- F1. 1x WASTE BIN 30l
- G1. 3x PLANT IN POT WITH LOGO

COFFEE ZONE

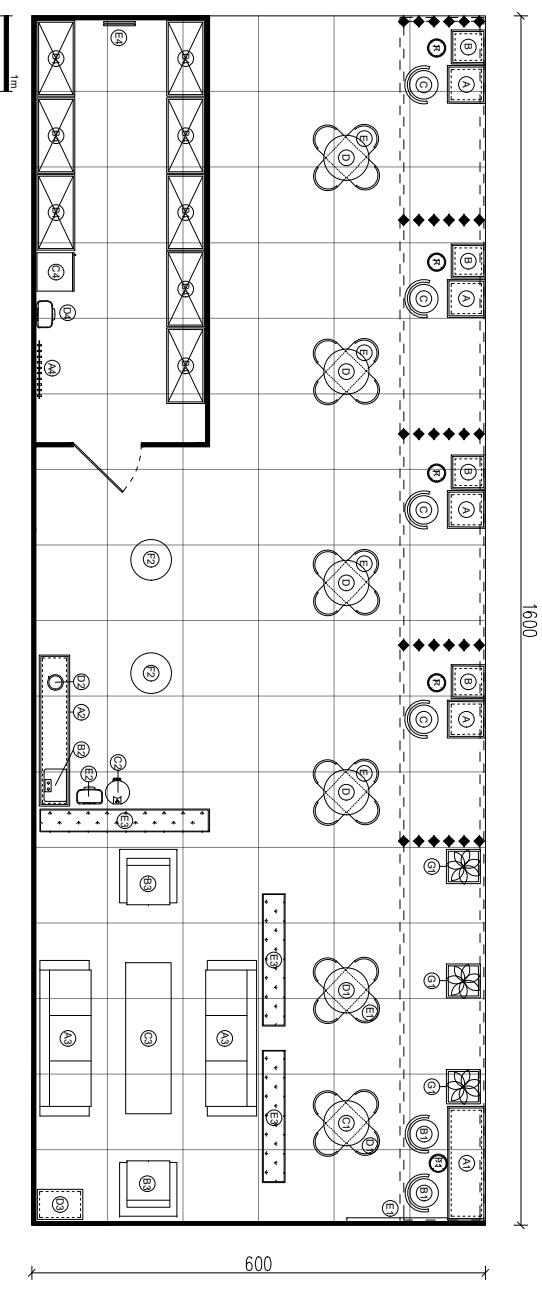
- A2. 1x CABINET WITH WORKTOP [2x0.5x0.9m]
- B2. 1x COFFEE MACHINE
- C2. 1x WATER DISPENSER
- D2. 1x ELECTRIC KETTLE
- E2. 1x WASTE BIN 65l

MEETING AREA

- A3. 2x SOFA [2m long for 3 people]
- B3. 2x ARMCHAIR
- C3. 1x LOW TABLE [2m x 0.6m]
- D3. 1x SMALL CABINET WITH WORKTOP
- E3. 3x LONG POT WITH LOGO *POLANG TASTES GOOD*

STORAGE

- A4. 1x WALL HANGER FOR CLOTHES
- B4. 8x STORAGE RACK
- C4. 1x FRIDGE
- D4. 1x WASTE BIN 65l
- E4. 2x FOLDABLE CHAIR



ELEVATION SCALE 1:100



VISUALISATION



VISUALISATION



VISUALISATION



VISUALISATION



VISUALISATION

