



***DMEXCO Booth Design
Cologne, September 11th-12th 2019***

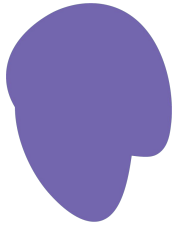
DMEXCO 2019 - Booth Design Criteria

- 28 sqm (front 7m x depth 5m)
- Terrace space, 3 closed sides
- Small reception area (optional)
- Storage cabins
- 3 meeting spots; furniture
- Hanging lights and logo above stand
- Carpet required
- Possibility to set up a happy hour stand
- Location: 6.1 Hall A036
- Budget: \$10,000

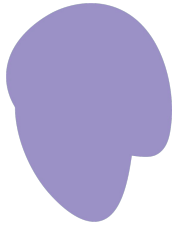
Concept: modern, startup feel, not so corporate, playful, can refer to website for a reference:

<https://pubnative.net/>

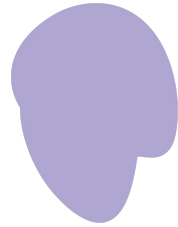
Colours



7366AE



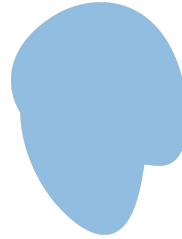
9B91C6



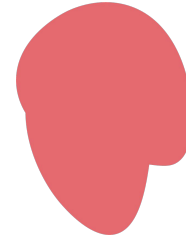
B0A6D2



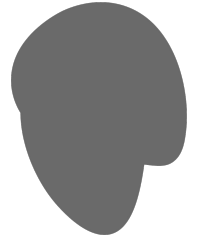
91BDE1



BAE4ED



E46A6f

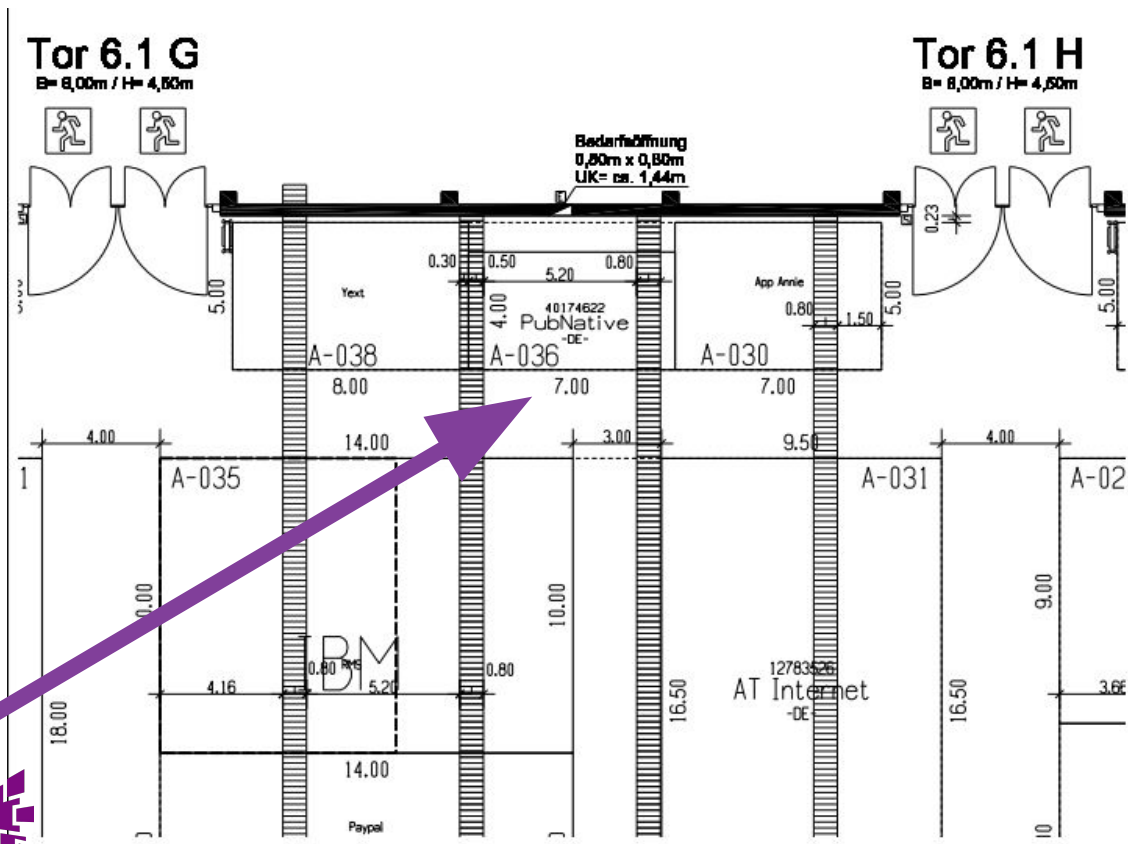


615b5c



Contains
white logo

Stand Plan



Maßstab / Scale: 1 : 200



Stand Plan

DM ■

EXCO

● 19

dmexco 2019

Lageplan / Floor plan

Aussteller / Exhibitor: PUBNATIVE GMBH

Kunden-Nr. / Customer-No.: 40174622

Halle / Hall: 06.1

Auftrag-Nr. / Order-No.: 2000191959

Stand-Nr. / Space-No.: A-036

Standtyp / Type of space: Reihenstand / Terrace space



Koelnmesse

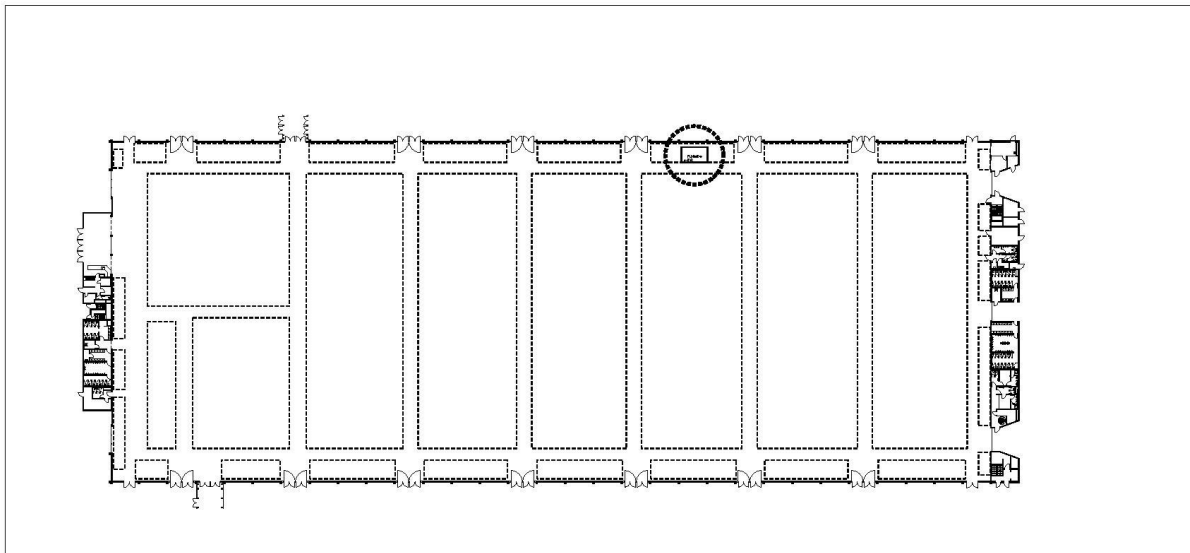
Koelnmesse GmbH

Postfach 21 07 60
50532 Köln - Deutschland
Tel. +49 221 821-0
Fax +49 221 821-2574
info@koelnmesse.de
www.koelnmesse.de



Standposition / Space allocation

Änderungen vorbehalten! / Subject to change!

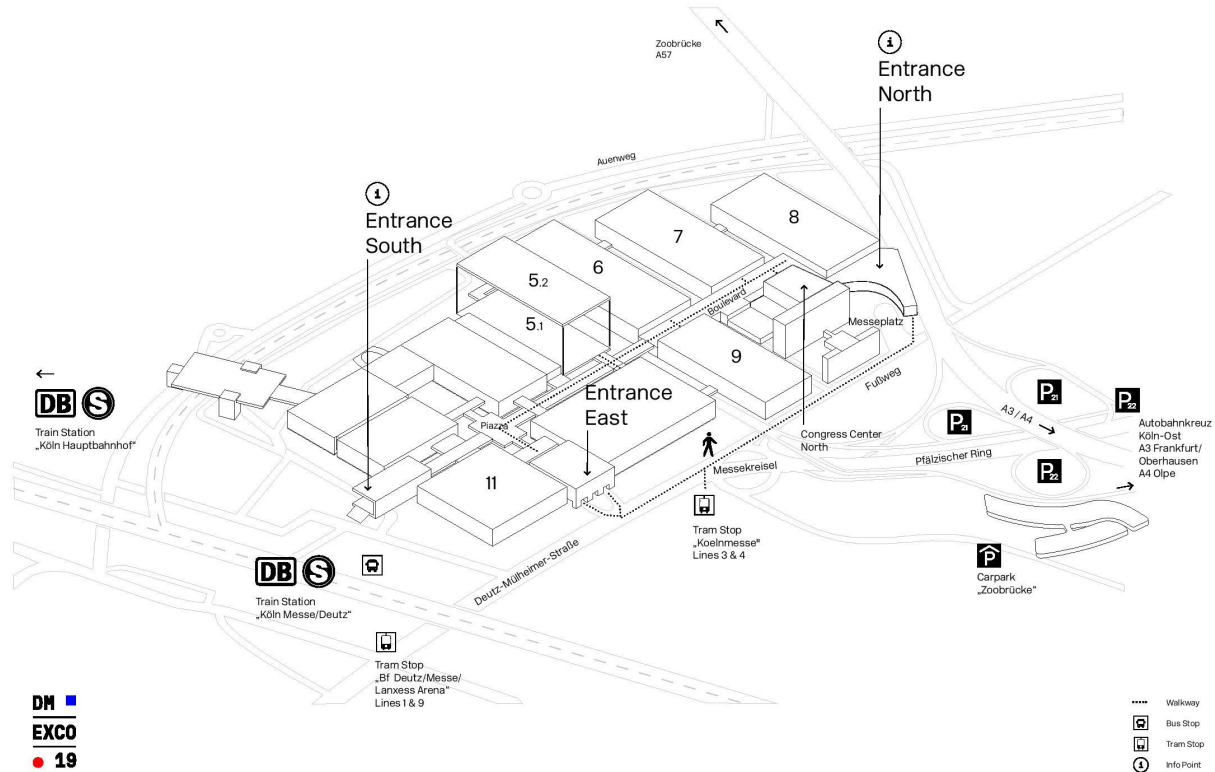


Legende und wichtige Hinweise siehe Beilage! / Key description and important information see enclosed form!

HAPLA-Print Lageplan - Veranstaltung dmexco 2019, Halle 06/202019, 06.1 Maßstab 1 : 1100, Datum 4. Jun 2019 12:41:03, Aussteller PUBNATIVE GMBH.

Site Plan

Site Plan



Previous Booths

DMEXCO '17



GMIC '17



GMIC '18



Previous Booths

DMEXCO '18



Previous Booths

MWC '17



MWC '18



MWC '19

